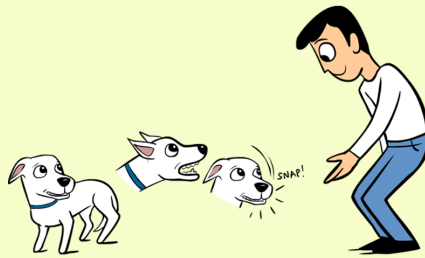


# Canine Bite Levels

Designed by Dr. Sophia Yin, Illustrated by Lili Chin\*

## Level 1 (Pre-Bite)

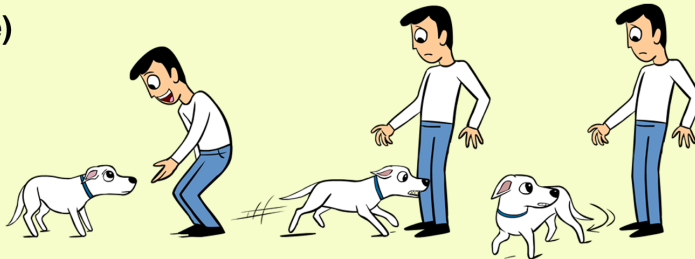
Snapping (air bite, no contact)



Get help before it progresses to an actual bite. Do not punish these warning signs or the dog may progress to biting without warning. Instead, learn the signs of fear and anxiety that the dog may show prior to this situation and the common human actions that might contribute.

## Level 2 (Near-Bite)

Tooth contact on skin but no puncture



This near-bite is concerning even though it is inhibited and has not yet broken skin. Ask yourself what earlier signs (i.e. of fear/anxiety) you missed.

## Level 3

3A. Skin punctures, single bite (all punctures shallower than the length of the canine tooth)



Even though the bite may not be severe it is still reportable. Reporting is mandatory if the victim is treated in a hospital. Once your dog has actually bitten at this level (or higher) he will always be considered a liability, even if, with behavior modification he is 99.9% improved.

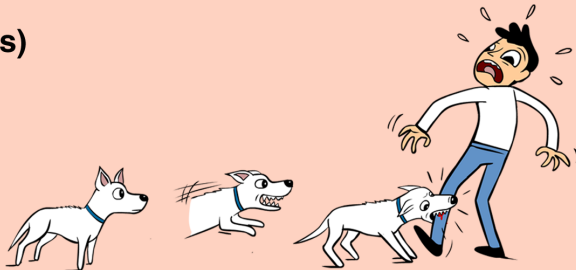
3B. Skin punctures, multiple bites (all punctures shallower than the length of the canine tooth)



Multiple bites generally mean the dog is in a higher arousal state. The dog is reacting without thinking in between bites.

## Level 4 (Very Serious)

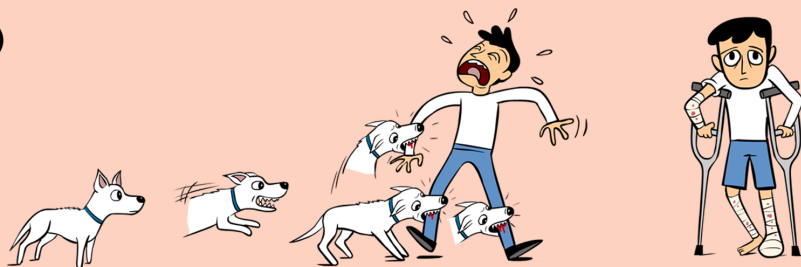
Single bite with punctures deeper than the length of the canine (the dog bit and clamped down) or with slashes in both directions from the puncture (the dog bit and shook his head)



This is a harder bite than a level 3 bite. It's no longer inhibited. Therefore, it represents a much higher liability. This level bite can kill a child.

## Level 5 (Very Serious)

Multiple-bite attack with deep punctures, or multiple attack incident



Dogs that bite at this level have generally had practice biting at levels 3 and 4 already. Some dogs are so fearful that a scary event triggers such a high arousal state that they get stuck in a reactive mode and continue to bite.

## Level 6 (Death)

Victim killed or flesh consumed



It's important to realize that even little dogs and puppies can kill infants and small children and that death may be due to overly aroused play, rather than viciousness or fear. It's best to seek qualified help before the dog even reaches a level 2 bite.

\*These levels are based on the levels developed by Dr. Ian Dunbar

©2012 Dr. Sophia Yin, DVM, MS

For additional Low Stress Handling information, posters, flyers, books, and DVDs, please visit our website at <http://DrSophiaYin.com>



**CATTLEDOG PUBLISHING**  
[drsophiayin.com](http://drsophiayin.com)  
 A VETERINARY CORPORATION



Questions@cattledogpublishing.com

(530) 757-2383 — P.O. Box 4516, Davis, CA 95617

Support@lowstresshandling.com